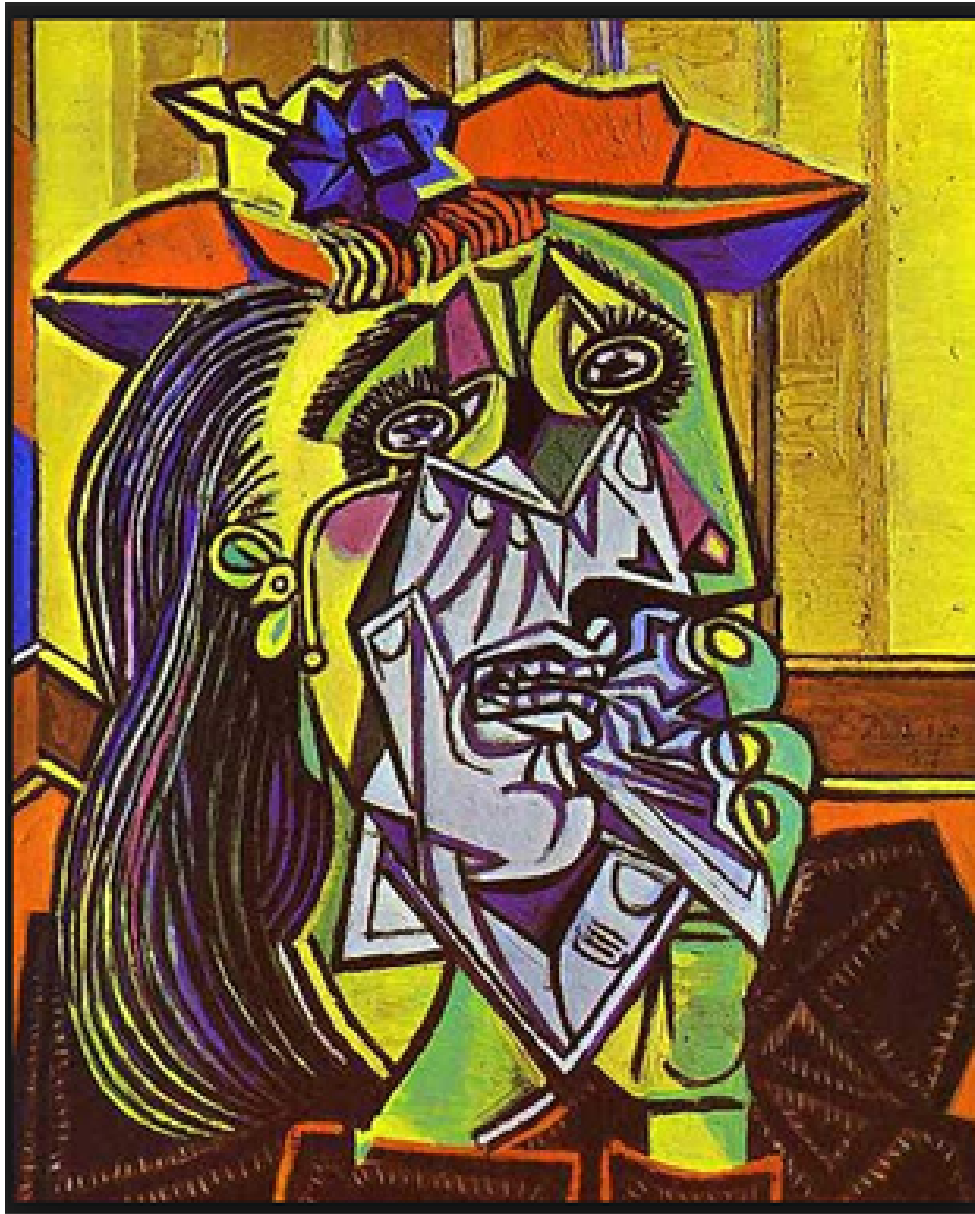


# *Weeping Woman* (1937)

by Pablo Picasso



**oil on canvas  
60x49 cm  
Tate Liverpool**

Is this painting related to **Cubism**?

**Cubism** is a style and movement in early 20th century in which objects and people are represented as **geometric shapes**, often shown from many different angles at the same time.

The model for the painting was Dora Maar, who was a French professional photographer.

This is a study of how much pain can be communicated by a human face. It has the features of a specific person, Dora Maar, whom Picasso described as "always weeping". She was in fact his close collaborator in the time of his life when he was most involved with politics.

Let your eyes wander over the sharp surface and you are led by the jagged black lines to the picture's centre, her mouth and chin, where the flesh seems to have been peeled away by corrosive tears to reveal hard white bone. The handkerchief she stuffs in her mouth is like a shard of glass.

Her eyes are black apertures. When you are inside this picture you are inside pain; it hits you like a punch in the stomach.

Picasso's insistence that we imagine ourselves into the excoriated face of this woman, into her dark eyes, was part of his response to seeing newspaper photographs of the Luftwaffe's bombing of Guernica on behalf of Franco in the Spanish civil war on April 26, 1937.